

生物制药隔膜阀

Mini Diaphragm Valve



国家高新技术企业 浙江省高新技术企业
www.cndonjoy.com

 **DONJOY** 东正

东正一直致力于重大技术进步，是您值得信赖的事业伙伴！
Donjoy committing to major technological advances, is your reliable business partner!

0.1	自控调节阀+控制器 Automatic control regulating valve +Control head
0.2	生物制药隔膜阀 Biopharmaceutical diaphragm valve
0.3	高洁净泵 High purity pumps
0.4	防混蝶阀+蝶阀 Mixing proof butterfly valve +Butterfly valve
0.5	球阀 Ball valve
0.6	截止换向阀+防混阀+罐底阀 Divert seat valve+Mixing proof valve +Tank bottom valve
0.7	角座阀+截止阀 Angle seat valve+Globe valve
0.8	止回阀+恒压阀+安全阀+减压阀 Check valve+constant pressure valve+safety valve +air release valve
0.9	清洁技术+取样阀+视镜+照明技术 Clean technology+sample valve+sight glass +lighting technology
0.10	过滤器+人孔 Filter+man hole cover(manway)
0.11	卫生管件 Sanitary fittings ASME BPE DIN11852 Bs4825 SMS ISO IDF 3A



注意：
目录技术资料仅供设计参考，
设计更新和技术升级恕不另行通知！

不断革新的技术、日新月异的市场发展和客户需求是当今我们面临的巨大挑战。面对这些挑战我们信心十足，因为东正高度专业化的产品和技术创新，是我们未来将以更高、更优的产品来满足不断增长的市场需求。

Technological innovation, rapid development of the market and customer needs are the greatest challenges facing us today. Facing with these challenges we are confident, because of highly professional products and technological innovation, we will meet the growing demand of market and customer with our better and better products.

法律声明：
目录样册版本属东正所有，如有抄袭东正将追究其法律责任和经济赔偿。
东正众多技术设计，都具有专利保护，如有抄袭，东正必将追究法律责任和经济赔偿。

领先源于创新 创新源于专业

东正的专业与品质的邂逅源于创新的精神



现代化工厂已经投产，期待您的光临！
温州空港经济园区生产基地
Wenzhou airport economic zone production base

占地面积29000m²，总投资1.2亿元，新引进ABB工业机器人、日本马扎克5轴加工中心、ABB机器人抛光设备。

东正创立于1993年，注册资金5508万，是一家专注于研发高品质PID过程控制器、阀门定位器、流量控制器，阀门控制单元，高洁净过程控制阀、智能自控阀，高洁净泵、高洁净管材和管道配件。公司高度专业化的产品和技术专注于生物制药、食品饮料、酿酒、精细化工等工业领域。东正众多的创新解决方案，对满足全球，尤其是新兴市场不断增长生物制药和食品饮料行业的需求起到了积极作用。

Covering an area of 29000 m², with total investment after construction is expected to 120 million yuan, introduces new ABB industrial robot, Japan mazar-e-sharif grams of five axis machining center, ABB machine Polishing equipment.

东正制造的产品母材料、加工技术、焊接技术、表面处理等技术指标均已达到国内外先进水平。且符合ASME BPE、EHEDG、FDA、3A等一系列国际标准和规范要求，先后通过了由德国TÜV机构实施的欧盟承压设备指令(PED-97/23/EC)和(MD-06/42/EC)认证、美国3A机构实施的3-A卫生标准认证、中国安全阀特种制造设备(TS)许可证和中国质量认证中心CQC ISO9001:2008质量管理体系认证等多项国际权威认证。

东正凭借先进的技术、优异的品质和完善的售后服务体系，先后被评定为国家高新技术企业，省著名商标、省科技型企业、创新型企业、专利示范企业、研发中心企业，守合同重信用AAA企业等众多荣誉。

关于东正 About DONJOY

Donjoy was built up in 1993, with registered capital RMB 55,08 millions. We focus on developing high quality PID process controller, the valve positioner, the flow controller, the valve control unit, high purity process control valve, intelligent self-control valve, high purity pump, high purity tubing fitting and pipeline accessories. Donjoy's products and technologies are widely used in biopharmaceutical, food, drink, wine fine chemicals and other industrial fields. Donjoy's innovation solutions meet the growing demand of the industry of biopharmaceutical, food and beverage from the whole world, especially the emerging market.

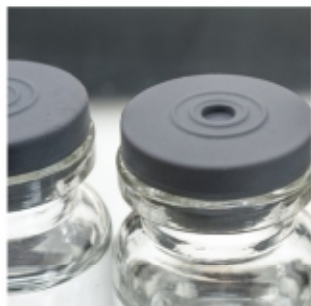
Raw material, processing technology, welding technology, surface treatment from Donjoy have achieved advanced levels of domestic and foreign market. Donjoy productions according to ASME BPE, EHEDG, FDA and 3A standard, get certificate of PED-97/23/EC and MD-06/42/EC issued by TUV, 3A issued by 3A organization, TS licence and ISO9001:2008.

Donjoy with advanced technology, excellent quality and perfect after-sales service system, has been assessed as the national high-tech enterprises, the Provincial Famous Trademark, the Provincial Science and Technology Enterprises, Innovative Enterprises, Patent Model Enterprises, R & D Center, AAA Credit Enterprises.



创立于2005年现代化工厂
温州滨海经济开发区生产基地
Wenzhou binhai economic development zone production base

DONJOY high-purity valve, pump, control system, pipe and accessories, provide the most excellent solution for various business scopes.



Biopharmaceutical



Dairy



Food



Beverage



Water Processing



Brewing



Fine Chemical

制造与检验 Manufacturing and testing



机器人生产线 Robot production line

全自动弯管设备 Automatic pipe bending equipment

DONJOY以科学技术是第一生产力，也是企业核心竞争力，只有不断投入核心技术研发和创新，不断追求卓越，精益求精、以先进生产设备，严格的质量管理体系，精密的生产检测流程，保证每一款产品优良的性能。

Science and technology constitute a primary productive force, also the core competitive strength of the enterprise. Continuously intensifying the research, development and innovation of core technology, pursuing prominence and keeping improving, ensuring the excellent quality and performance of every single product by advanced production equipment, strict quality control and precise production and inspection procedures.

荣誉与资质

Honor and qualification

	<p>3A</p> <p>东正是美国3A认证组织的金牌赞助商，3A是一个自愿组织，致力于维护公共卫生和奶制品产品质量通过独特的行业监管程序的设备，用于处理乳制品的卫生标准3A认证。 东正通过认证产品，阀门系列55-02-1783、64-00-1784、84-02-1786、85-03-1787、53-06-1782、54-02-1580、68-00-1785，管件(63-03)证书号(1581)等多种规格型号。</p>
	<p>PED/97/23/EC & MD/06/42EC</p> <p>东正通过了TUV 欧共体压力设备97/23/EC质量保证模式H&材料(管件)制造认证。 阀门证书 NO.CE 0036 泵类证书 NO.705201402401-00</p>
	<p>FDA177.2600</p> <p>东正生产的阀门和泵以及流体设备等，与物料接触密封圈全部通过或符合美国食品和药品管理局和联邦法规第21条即，CRF 21 FDA177.2600和FDA177.1550认证，其涵盖： EPDM VITON(FPM) SILICON HNRPTFE橡胶塑料材料等。</p>
	<p>ISO9001/2008</p> <p>东正通过中国质量认证中心CQC，ISO9001-2008/GB/T19001-2008企业质量管理体系认证。其证书编号: 00108Q24215R1M/3302</p>
	<p>卫生许可证</p> <p>东正通过了省卫生厅卫生阀门、卫生管件等检验，且获得了其颁发的证书，其编号: So083。 其许可证为国家出台的生活饮用水卫生监督管理方法证书。</p>
	<p>高新技术企业</p> <p>东正通过多年发展和技术创新已获得了多项国家发明专利，100多项实用新型专利，现已成为国家高新技术企业。</p>
	<p>浙江省著名商标</p> <p>东正09年获得了温州市著名商标，2012年获得了浙江省著名商标。</p>

DONJOY不但拥有以上认证和荣誉，且被评定为省科技型、创新型、专利示范、研发中心、守合同守信用企业等众多的荣誉证书。

隔膜阀

Diaphragm valve



应用 Applications

- ◆ 隔膜阀，手动或气动操作，专门应用于制药工业中的卫生和无菌过程。
- ◆ 该阀门非常适用于流体控制和开/关的任务。
- ◆ 该隔膜阀同其他阀门设计相比，更容易清洁，很好的处理带颗粒的物料，在流量控制的应用上，气穴现象也更少些。
- ◆ Diaphragm valves, manually or pneumatically operated, and specifically designed for use on hygiene and aseptic processes in the pharmaceutical industries.
- ◆ The valve is excellent for flow control as well as for open/ close duties.
- ◆ The diaphragm valves are better in feature of flow in comparison with other valves. It is easier to clean up and better to process the substance with particles. The phenomenon of air pocket is rare during application of flow control.

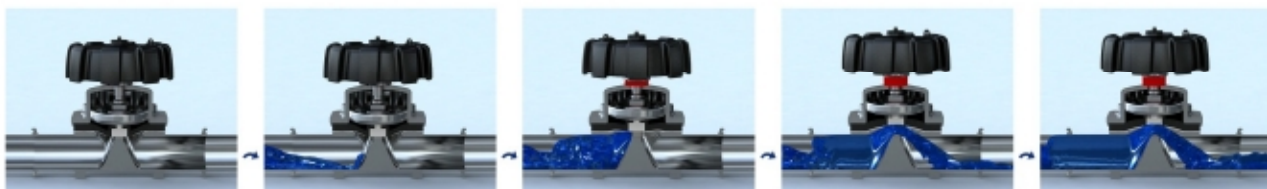


隔膜阀

Diaphragm valve

工作原理 Operating principles

- ◆ 膜片提供阀体密封和阀座密封。里面没有路径通到外部环境，所以该阀门适用于无菌过程。
 - ◆ 当阀门关闭时，支撑膜片的压力垫朝阀体上的密封面移动。当压力板移动时，膜片弯曲，被迫推向阀体中心的阀座区域，因此关闭了通向阀体的流体路径。
 - ◆ 阀体和压力板的相互关系，防止了膜片的挤压。
 - ◆ 该阀门可以手动也可以气动操作，也可以通过控制器和电磁阀控制。
- ◆ The diaphragm provides the body seal as well as the seat seal. There are no paths to the outside environment so it suitable for aseptic processes.
- ◆ When the valve is closed a pressure pad which supports the diaphragm moves towards the sealing face on the body. When the pressure plate moves the diaphragm flexes and is forced down onto the seat area in the centre of the body thus closing off the flow path through the body.
- ◆ The inter relationship of body to the pressure plate prevents over compression of the diaphragm.
- ◆ The valve can be manual operation and pneumatic operation control tops of solenoid valves.



隔膜阀认证 Certificates

- ◆ 制造工艺中用到的所有合成树脂和添加剂都符合FDA认证
 - ◆ 材料化学成分、物理性能和制造工艺都备有证明文件
 - ◆ 所有隔膜片FDA一致性认证
 - ◆ -21-CFR-FDA 177.1550 全氟合成树脂
 - ◆ -21-CFR-FDA-177.2600 橡胶
 - ◆ USP 28CLASS VI CHAPTER 87 IN VITON和CHAPTER 88 IN-VITON一致性认证
 - ◆ 3-A一致性认证 N.O.: 54-02-1580
 - ◆ EN 10204-3.1关于不锈钢化学成分合成追溯性证书
 - ◆ CE-PED/97/23/EC N.O.: TUV DGR 0036-QS-1153-14
- ◆ All synthetic resin and additive are comply with FDA certification
- ◆ Material chemical composition, physical properties and manufacturing process are documented
- ◆ All diaphragm seal consistency with FDA certificate
- ◆ -21-CFR-FDA 177.1550 perfluorocarbon synthetic resin
- ◆ -21-CFR-FDA-177.2600 rubber
- ◆ USP 28 class VI CHAPTER 87 IN VITON and CHAPTER 88 IN - VITON consistency the authentication
- ◆ 3 - A consistency the authentication
- ◆ EN 10204-3.1
- ◆ CE-PED/97/23/EC

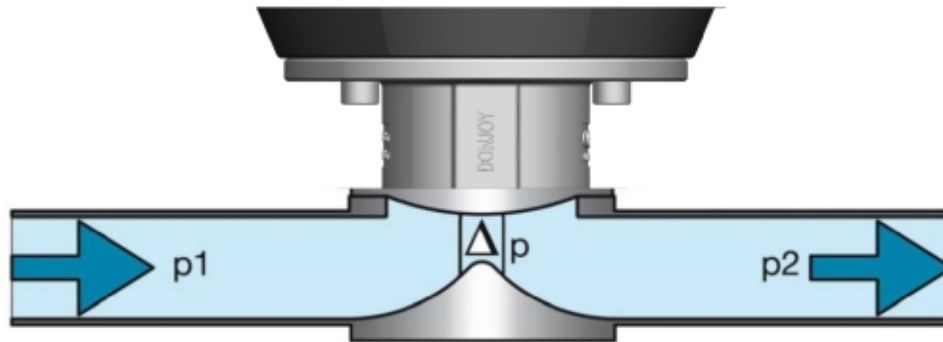


流量和隔膜阀通径的关系

Relations between flow rate and o.d

- ◆KV值是用来定义阀门流量的一个技术参数。该数据描述了5°C到30°C的水在压差为1Bar情况下的通量。
- ◆KV值是表示阀门100%开启状态下的KV值。

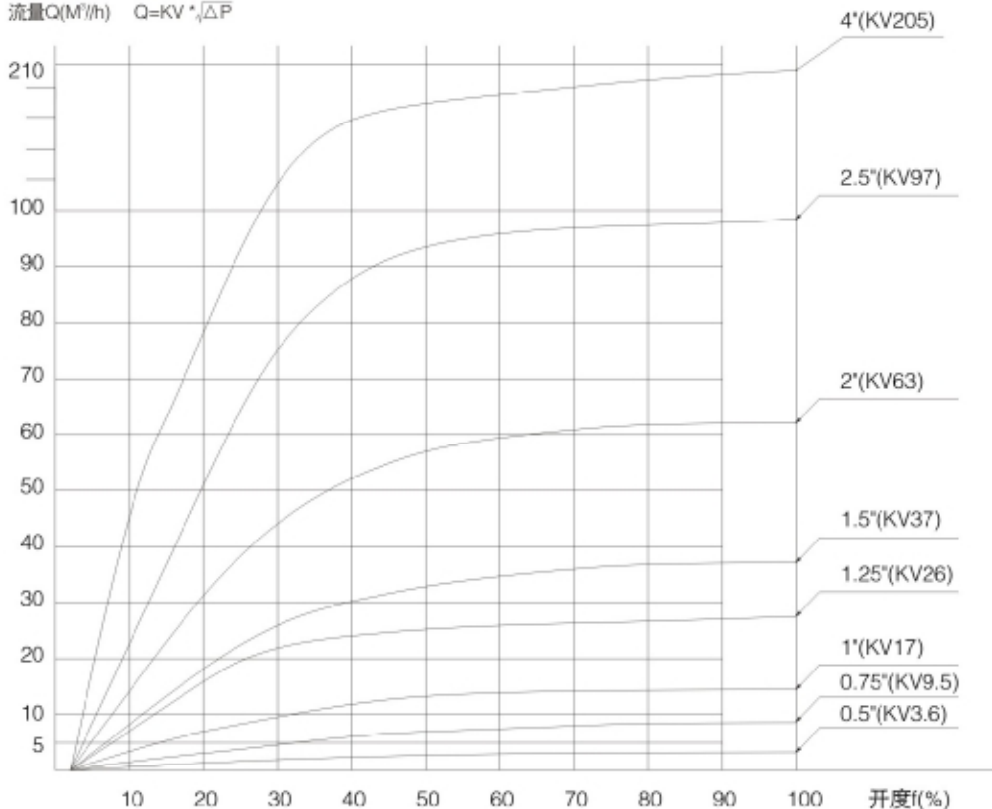
- ◆KV is a data of the flow rate. The data describes valve flux when the water of 5°C to 30°C in the pressure difference for 1bar
- ◆KV data is the valve flow open.



注意：开关量KV曲线仅供参考，100%开度为精确KV值
 Note: On-off KV curve for reference, 100% open is accurate KV value

隔膜阀流量/选择(开度f)图表
 The diaphragm valve flow/choice (opening f) chart

流量Q(M³/h) $Q = KV \cdot \sqrt{\Delta P}$



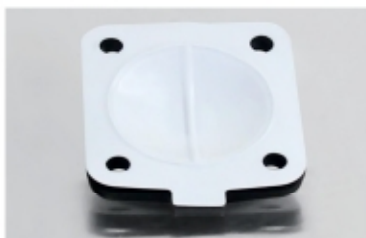
注意：上面图表适用于，介质：水(20°C)
 Note: the above chart suitable for, medium: water (20 °C)

隔膜片

Diaphragm gasket

隔膜

- ◆除了阀体之外，膜片是唯一与介质直接接触的部件，隔膜阀是靠膜片把介质和执行结构以及外部空气隔离开来。膜片也是运动部件，膜片靠隔膜阀的上下移动实现介质流量的控制和切断。
- ◆DONJOY膜片根据自己的测试方式和标准以及第三方的严格测试规范下经过多年的研发和测试，这些试验是模拟现场真实的工况。例如，用自动化饱和蒸汽闭环系统测试膜片，对膜片形状，材质成分，阀体设计，执行机构以及阀门装配等产生的影响。
- ◆所有的不同材质的膜片，安装到相同规格上都是通用的。即使更换执行机构也无需更换膜片。



一片粘合膜片PTFE+EPDM

PTFE 隔膜片具有高抗化学腐蚀性，极高的稳定性，弹性好，寿命长，密封性高，无冷变性，以及不受温度的波动影响的极佳性能，无论是热循环，冷循环，还是蒸汽消毒系统。

- ◆规格：1"-3"，DN20-DN80
- ◆粘合膜片-20到120°C

PTFE diaphragm tablet has high chemical resistance, high stability, good flexibility, long life, high sealing, no cold degeneration, and not affected by temperature fluctuations excellent performance, whether it is thermal cycle, cold cycle, or steam disinfection system.

- ◆Specification: 1" - 3", DN20-DN80
- ◆Separate diaphragm - 20 to 120 °C



单层膜片EPDM/Silicone/FPM Single diaphragm gasket EPDM/Silicone/FPM

橡胶膜片内嵌一层硫化纤维层增强其机械性能，该膜片在压力和温度升高具有较高的密封稳定性，加强纤维硬化在不锈钢螺栓上，从而保证橡胶更好与金属粘在一起。

因此橡胶膜片更适合在真空环境下使用。

- ◆规格：1"-4"，DN20-DN100
- ◆EPDM-10到120°C

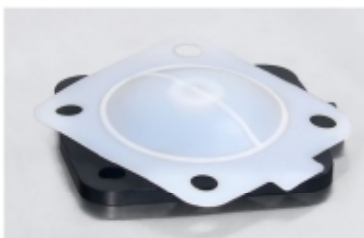
Rubber diaphragm embedded a layer of vulcanized fiber layer enhance its mechanical properties, the diaphragm in pressure and temperature has high seal stability, reinforcing fiber hardening in stainless steel bolt, so as to ensure better rubber and metal bond together.

Therefore rubber diaphragm more suitable for use in vacuum environment.

- ◆Specification: 1" - 4", DN20-DN100
- ◆EPDM - 10 to 120 °C

Diaphragm

- ◆In addition to outside the valve body, the gasket is the only direct contact with the media parts, diaphragm valve is to rely on diaphragm to medium and executive structure and external air apart. Gasket is also moving parts, diaphragm on the diaphragm valve move to realize medium flow control and cut off.
- ◆DONJOY diaphragm valve gaskets according to their testing methods and standards and third party under strict test specification after many years of research and test, these tests are simulated field real condition. For example, in the automation saturated steam closed loop system testing gasket, the gasket shape, material composition, body design, actuators and the influence of valve assembly, etc.
- ◆All the different materials of the gaskets may be assembled to the valve of the same specifications. No need replacement gasket even changing actuator.



推荐

二片式/双层膜片PTFE+EPDM Two type/double diaphragm PTFE + EPDM

由EPDM和PTFE组成的膜片，该膜片的特点在于阀门处于关闭状态时，膜片本身形状就能和阀体密封，从而降低了膜片承受力，延长了膜片的寿命。该膜片可耐受更高的温度和各种恶劣工况。

- ◆规格：1/2"-4"，DN10-DN100
- ◆分离式膜片-20到150°C

By EPDM and PTFE composed of diaphragm, the characteristics of the diaphragm is the valve is in the closed position, diaphragm itself shape can and body sealing, which reduces the diaphragm tolerance and prolong the service life of the diaphragm.

- ◆Specification: 1/2"-4", DN10-DN100
- ◆Separate diaphragm - 20 to 150 °C



迷你型隔膜阀膜片 Mini-type diaphragm gasket

- ◆规格：1/4"-3/4" DN6-DN15
- ◆单层：EPDM SILCON PFM
- ◆双层：PTFE+EPDM
- ◆EPDM-10到120°C
- ◆PTFE+EPDM-20到150°C

- ◆Specification: 1/4" - 3/4" DN6 - DN15
- ◆Single: EPDM SILCON PFM
- ◆Double: PTFE + EPDM
- ◆Suitable temperature (°C)
- ◆EPDM - 10 to 120 °C
- ◆PTFE + EPDM - 20 to 150 °C

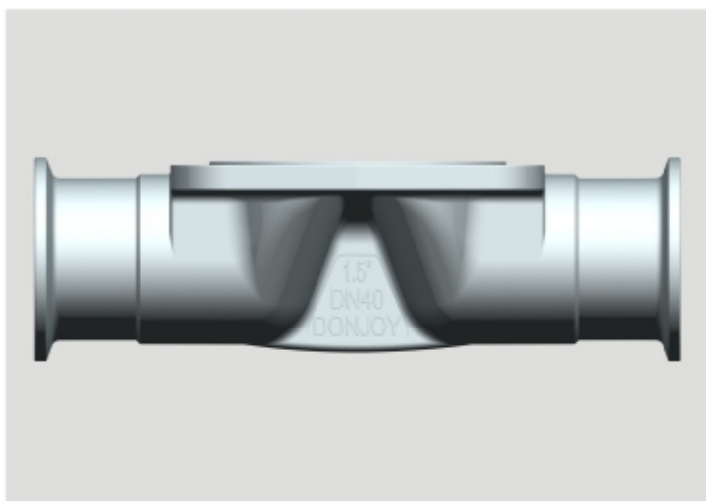
阀体 Valve body



锻造阀体 Forging body

锻造阀体毛坯是通过一块不锈钢锭，在锻造过程中，随着锻压高温的提供，通过挤压毛坯外形改变，通过锻压后阀体密度更高，结构更加均匀，无沙孔以及其他的杂质。再通过加工中心对其进行高精度加工。

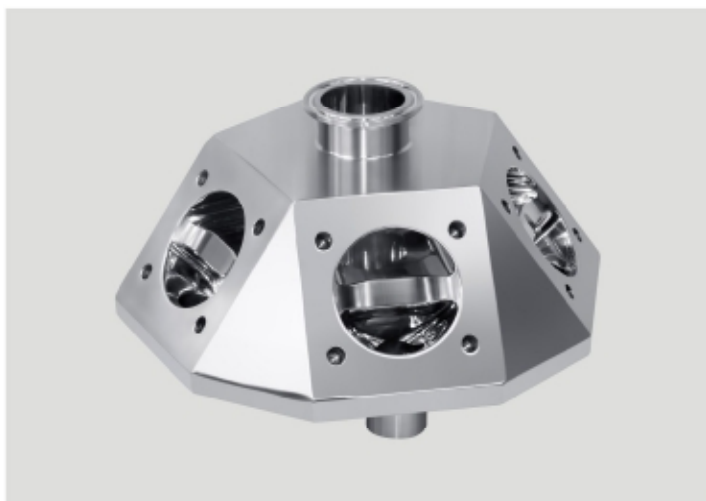
Forging body blank is through a piece of stainless steel ingot, in the forging process, along with the high temperature forging provide, through extrusion blank shape change, through the forging after body density higher, the structure is more uniform, no sand hole and other impurities. Then through the processing center carry on the high precision machining.



铸造阀体 Casting body

铸造阀体是由模具做成石蜡模型，石蜡模型渗入在陶瓷里，达到让整个阀体蜡模表面形成一层坚固的陶瓷。融化掉蜡模后，再注入融化的不锈钢溶液，冷却后敲掉外表的陶瓷后，毛坯阀体就成型了。铸造的尺寸非常的精确，外观较光滑，整洁。

Casting body is made by the mould paraffin wax model, paraffin wax model infiltration in ceramic, to let the whole body wax mold surface form a layer of strong ceramic. Melt wax mold, then into the melting of the stainless steel solution, after cooling knock off the appearance of ceramic, blank body is made up. Casting size is very accurate, the outward appearance is a smooth, clean and tidy.



圆钢阀体 Round steel body

圆钢阀体选用超纯材料，通过CNC切削设备直接切成块状材料，再经过CNC五轴加工中心对其进行高精度加工。

Round steel body chooses ultrapure materials, cut into squares material directly by CNC cutting equipment, To a five axis CNC machining center for precision machining.

隔膜阀相关参数

Diaphragm valve relevant specification

阀体材质有多种选项

- ◆ 1.4435(ASTM A 351 CF3M)
- ◆ 1.4435-BN2 (316L) Fe < 0.5% Forged body
- ◆ ASME BPE 316L
- ◆ 1.4404/316L

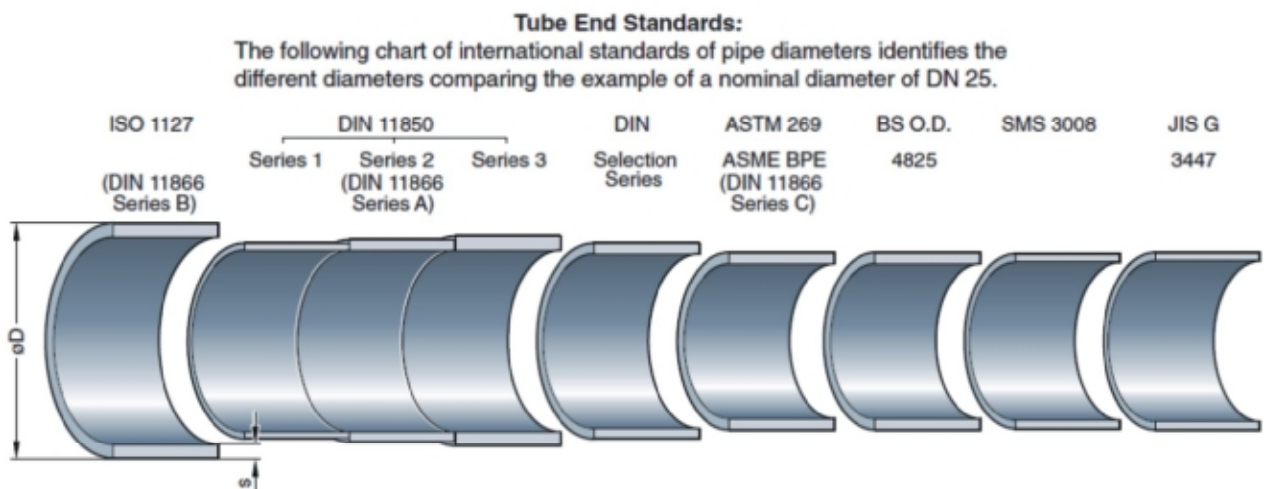
不锈钢化学成分规范
Chemical composition for automatic weld ends, %

根据ASDME BPE Table DT-3		EN 10088-3 1.4435 NB2 Fe≤0.5%	
Carbon, max	0.035	Carbon, max	< 0.03
chromium	16.00-18.00	chromium	16.00-18.00
manganese, max	2.00	manganese, max	2.00
molybdenum	2.00-3.00	molybdenum	2.5-3.0
nickel	10.00-15.00	nickel	12.5-14.0
phosphorus, max	0.045	phosphorus, max	0.045
silicon, max	1.00	silicon, max	1.00
sulfur	0.005-0.017	sulfur	≤0.030
		nitrogen	< 0.11

管道接口标准 Pipeline end standard

下表格：以DN25为列的不同国际标准卫生级不锈钢管道直径的区别

Next form: Take DN25 for example to illustrate the stainless steel pipe OD difference in different International standard health grade



阀体表面 Body surface

表面处理 Surface treatment

对高洁净的工艺管路系统来说，表面的粗糙度是极其重要的技术指标
For high clean process piping system, the roughness of the surface is an extremely important technique index



Surface finish: machined,
Ra 1.2 μm



Surface finish: machined,
Ra 0.8 μm



Surface finish: fine-machined,
and grinded, Ra 0.4 μm



Surface finish: fine-machined,
and grinded, Ra 0.2 μm



表面抛光 Surface polishing

Ra=粗糙度
平均粗糙度Ra值被作为衡量一个阀体内表面光洁度的一个参数。
LT5.6mm 长度/测量Lc0.8mm进行5次测量粗糙度得出的平均值粗糙度Ra值。
按照ASME BPE 表SF-3标准进行分类。

Ra = roughness
Average roughness Ra data is used as a measure of valve body surface finish of a parameter.
LT5.6 mm length/measurement Lc0.8 mm for five measuring roughness obtained average roughness Ra data.
According ASME BPE table to classified

Definition of the codes for Ra-Values

Allocation to the standard DIN 11866

Ra μm	DIN 11866	α
	Hygiene class	E-polished
0.8		
0.8	HE3c	●
0.6		
0.6		●
0.4		
0.4	HE4c	●
0.25		
0.25	HE5c	●

Allocation to the standard ASME BPE Table SF-6 Mechanically Polished

ASME BPE Code	Ra Average*		Ra Max	
	$\mu\text{-Inch}$	μm	$\mu\text{-Inch}$	μm
SFV3	25	0.625	30	0.75
SFV2	20	0.5	25	0.625
SFV1	15	0.375	20	0.5
Mechanically polished and electro polished				
SFV6	20	0.5	25	0.625
SFV5	15	0.375	20	0.5
SFV4	10	0.25	15	0.375

迷你型隔膜阀-非常灵活的各种组合

Mini-type diaphragm valve-Flexible various combinations

DONJOY创新设计 专利保护

执行机构 Actuator



不锈钢手动 Stainless steel hand wheel



塑料手动 Plastic hand wheel



手动阀盖 Manual valve cover



多功能双工位气动执行器
Multifunctional double-station
pneumatic actuator



不锈钢执行器
Stainless steel actuator



塑料执行器
Plastic actuator



不锈钢执行器
Stainless steel actuator

膜片 Gasket



PTFE+EPDM



EPDM / FPM

阀体 Body



适用规格: DN6-DN20, 1/4"-3/4"
Applicable specifications: DN6-DN20, 1/4"-3/4"

迷你型隔膜阀

Mini-type diaphragm valve



不锈钢气动隔膜阀
Stainless steel pneumatic

2015款不锈钢气动隔膜阀
2015 TYPE Stainless steel pneumatic



不锈钢气动隔膜阀
Stainless steel pneumatic diaphragm valve

迷你型气动隔膜阀

- ◆ SIZE: 1/4" - 3/4", DN6 - DN15
- ◆ 最高温度: -30到150℃ (双层膜片 EPDM+PTFE)
- ◆ 最高温度: -30到130℃ (单层橡胶膜片EPDM)
(其他材质, 满足更高温度)
- ◆ 最高压力: 单向 (DELTA P=100%)
常闭橡胶8bar, PTFE 6bar (选项)
常闭橡胶6bar, PTFE 4.5bar (标准)
常开和双作用橡胶8bar, PTFE 6bar
- ◆ 换装不同的执行器可以满足更高压力等级
- ◆ 锻造阀体: 1.4404/316L ASME BPE/1.4435 Nb2 Fe<0.5%
- ◆ 铸造阀体: 1.4404/316L
- ◆ 连接方式: 焊接、卡箍、法兰、螺纹
- ◆ 气动执行器适用于阀体: 直通、三通、多通道阀体、焊接组合阀体、罐底阀

Mini-type pneumatic diaphragm valve

- ◆ SIZE: 1/4" - 3/4", DN6 - DN15
- ◆ Max temperature: - 30 to 150 °C (depending on diaphragm)
(stainless steel actuator)
- ◆ Max temperature: - 30 to 130 °C (depending on diaphragm)
(plastic actuator)
- ◆ Max pressure: one way (DELTA P = 100%)
Normally close EPDM 8 bar, PTFE 6 bar (option)
Normally close EPDM 6 bar, PTFE 4.5 bar (standard)
Normally open and double action EPDM 8 bar, PTFE 6 bar
- ◆ Assemble different actuators can meet the higher pressure rating
- ◆ Forging body: 1.4404/316 L ASME BPE/1.4435 Nb2 Fe<0.5%
- ◆ Casting body: 1.4404/316 L
- ◆ Connection: welding, clamp, flange, thread
- ◆ Pneumatic actuator suitable for body: straight, tee, multichannel body, welding combination valve, tank bottom valve



塑料气动隔膜阀
Plastic pneumatic

铝合金气动隔膜阀
Aluminum pneumatic



不锈钢/塑料手轮隔膜阀
Diaphragm Valve with Stainless Steel/Plastic Hand Wheel

迷你多功能罐装隔膜阀

Mini multi-function canned diaphragm valve

技术特点 Technical characteristics

具有高效率、高精度罐装，物料零溢出，超长寿命(压力2bar高达800万次)，流量可调节，双工位气缸设计。

Zero overflow with high efficiency and high precision canning, materials, long life (2 bar pressure up to 8 million times), flow adjustable, double cylinder design.

SIZE: DN6-DN15, 1/4"-3/4"

材质: ASME BPE 316L, 1.4404

1.4435 NB2 Fe < 0.5%

阀体: 直通、三通、多通、U型三通、卡箍、焊接、螺纹、法兰等
执行标准: DIN11866 DIN11850, ASME BPE ASME A269

SIZE: DN6 - DN15, 1/4" - 3/4"

Material: 316 | ASME BPE, 1.4404

1.4435 NB2 Fe < 0.5%

The body straight, tee, communication, u-shaped tee, clamp, welding, thread, flange, etc

Execution standard: DIN11866 DIN11850, ASME BPE ASME A269



工作原理 Working principle

该隔膜阀具有双工位气缸，流量可调式的灌装阀门。

对于要求快速灌装且杜绝物料外溢或溅出灌装瓶。

1#气缸工作时流量为最大；

2#气缸工作时流量为最小，也可通过流量调节装置，调节2#气缸工作时的流量。

The diaphragm valve has a double location cylinder, flow adjustable filling valve. For rapid filling and prevent spillover or spatter material filling bottles.

1 # cylinder work flow as the largest;

2 # cylinder work flow to a minimum, also can through flow control device, regulating the flow of 2 # cylinder at work.

建议设置 Suggest setting

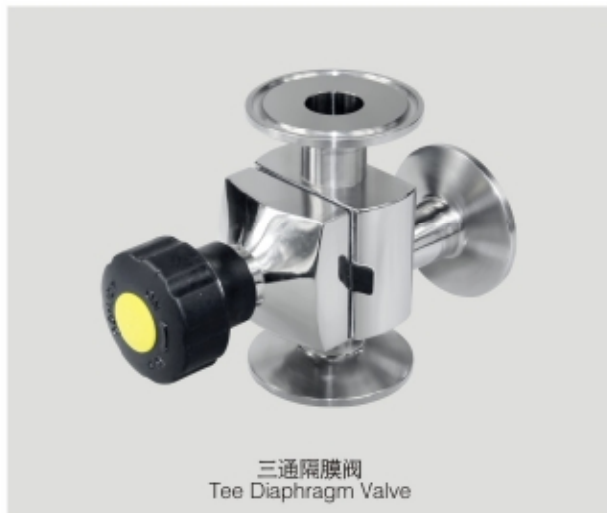
1#气缸开启液体灌装至70%—80%液位时关闭，2#气缸开启灌装至合理的液位。

1 # open cylinder filling liquid level to 70% - 80% when closed, open 2 # cylinder filling to a reasonable level.



迷你型隔膜阀

Mini-type diaphragm valve



三通隔膜阀
Tee Diaphragm Valve

迷你型隔膜阀

Mini-type diaphragm valve

- ◆ SIZE: 1/4"-3/4"
- ◆ 最高温度: -30到150°C(取决于膜片)
- ◆ 最高压力: 10bar/146PSI
- ◆ 手动适用于阀体: T型三通/L型三通/直通/多通道
- ◆ SIZE: 1/4" - 3/4"
- ◆ Max temperature: - 30 to 150 °C (depending on diaphragm)
- ◆ Max pressure: 10 bar / 146 psi
- ◆ Manual applies to body: T port/L port/direct-way/multiport



多通隔膜阀
4个通道, 3个控制阀
Multiport Diaphragm Valve
Four ports, three control valves



三通隔膜阀
Tee Diaphragm Valve



三通隔膜阀
3个通道, 2个控制阀
Tee Diaphragm Valve
Three ports, two control valves



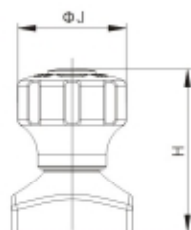
U型三通隔膜阀
U Type Tee
Diaphragm Valve

迷你型隔膜阀

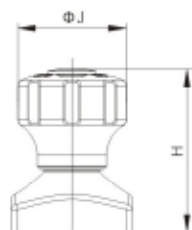
Mini-type diaphragm valve



微型执行机构Micro actuators



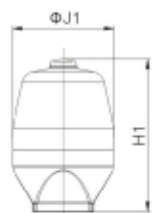
塑料手动
Plastic Hand Wheel
NO.MINI-VGM0S2



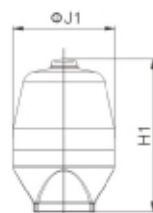
不锈钢手动
Stainless Steel Hand Wheel
NO.MINI-VGM0S1



气动双工位气动(灌装阀)
Pneumatic double location (filling valve)
NO.MINI-VGM0Q3



塑料气动
Plastic Actuator
NO.MINI-VGM0Q2



不锈钢气动
Stainless Steel Actuator
NO.MINI-VGM0Q1



不锈钢气动-2015款
Stainless Steel Actuator
NO.MINI-VGM0Q4

DIN32676/DIN11850-1/2

SIZE	J	J1	J2	J3	H	H1	H2	H3
DN6	38	60	54	60	57	104	116	118
DN8	38	60	54	60	57	104	116	118
DN10	38	60	54	60	57	104	116	118
DN15	38	60	54	60	57	104	116	118

ASME BPE/ASTM 269

SIZE	J	J1	J2	J3
1/4"	38	60	54	60
3/8"	38	60	54	60
1/2"	38	60	54	60
3/4"	38	60	54	60

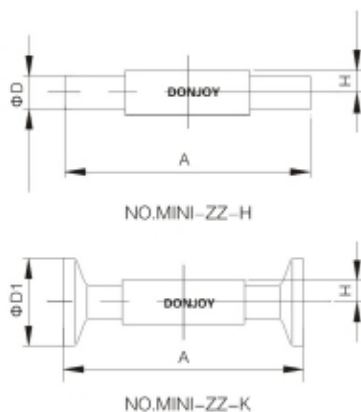
SIZE	H	H1	H2	H3
1/4"	57	104	116	118
3/8"	57	104	116	118
1/2"	57	104	116	118
3/4"	57	104	116	118

迷你型隔膜阀

Mini-type diaphragm valve

微型阀体 Tiny body

直通阀体 腔体比值 $\leq 3D$



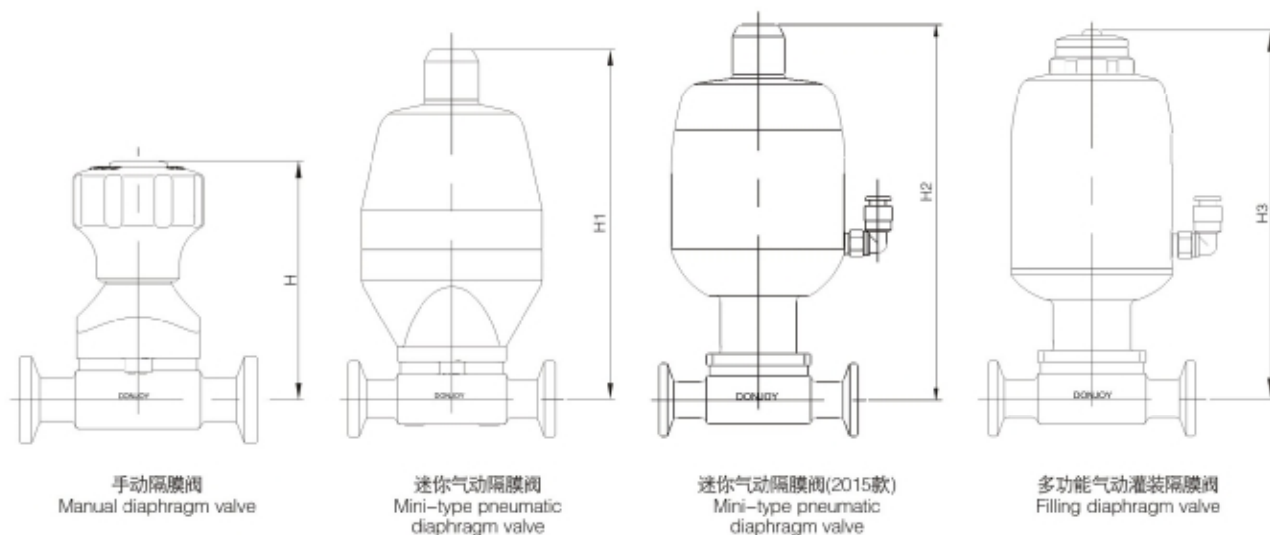
DIN32676/DIN11850-1/2

SIZE	D	D1	A	H
DN6	8	25.4/34	68.6	5.5
DN8	10	25.4/34	68.6	7
DN10	12/13	25.4/34	68.6	8.5
DN15	18/19	25.4/34	85	12

ASME BPE/ASTM 269

SIZE	D	D1	A	H
1/4"	6.35	25.4	68.6	5.5
3/8"	9.5	25.4	68.6	7
1/2"	12.7	25.4	68.6	8.5
3/4"	19	25.4/50.5	85	12

迷你隔膜阀 Mini diaphragm valve



手动隔膜阀
Manual diaphragm valve

迷你气动隔膜阀
Mini-type pneumatic diaphragm valve

迷你气动隔膜阀(2015款)
Mini-type pneumatic diaphragm valve

多功能气动灌装隔膜阀
Filling diaphragm valve

SIZE		H	H1	H2	H3
1/4"	DN6	69	116	130	128
3/8"	DN8	69	116	130	130
1/2"	DN10	69	116	130	128
3/4"	DN15	72	119	133	130



CHINA DONJOY TECHNOLOGY CO.,LTD.

DONJOY looking forward to your visit! Your telecommunications!



中国·东正 科技有限公司

温州滨海工业区：
温州龙湾区永强大道宏瑞路150号
温州空港新区：
温州通海大道港富路25号
总机：0577-86990888
传真：0577-86998000

Wenzhou Binghai industrial Park:
No.150 hongrui Road, Yongqiang Avenue,
longwan District, wenzhou.
Wenzhou airport Area:
No.25 Gangfu Road,Tonghai Avenue,
wenzhou
Tel: +86-577-86990888
Fax: +86-577-86998000
E-mail: donjoy@cndonjoy.com

www.cndonjoy.com

法律声明：

目录样册版本属东正所有，如有抄袭东正将追究其法律责任和经济赔偿。
东正众多技术设计，都具有专利保护，如有抄袭，东正必将追究法律责任和经济赔偿。